

Our Vision

Help 10 million enterprises to realize
resource recycling & clean production



37°C
EVAPORATOR



WhatsApp

Sincerely recruit global agents

Kunshan WSD Environmental Protection Equipment CO., Ltd.

NO. 8 Jinwei Road, Changshu, Jiangsu Province, China

Tel: 86-13761235591

Fax: (86-512)36835189

Web: www.winsonda.com

Email: jessica@wsdks.com

WSD Environment Protection Equipment Co., LTD.

WSD Brief



WSD Environmental Protection Equipment Co., Ltd., established in 2009, now has more than 300 employees. The company boasts a high-quality fluid diversion R&D and production team and has consistently maintained high levels of innovation in technology and product development. In the field of industrial wastewater treatment, we have obtained more than 150 patents. WSD has been honored with prestigious titles such as National specialized special new small giant enterprise, National High-tech Enterprise, Jiangsu Province Environmental Protection Industrial Wastewater Evaporator Engineering Technology Research Center, Jiangsu Province Specialized Special New Enterprise, and Jiangsu Gazelle Enterprise. The company is committed to making significant contributions to resource conservation, enhancing corporate economic benefits, promoting social and economic growth, achieving effective resource allocation, and fostering sustainable economic development.

2,000 clients around the world

300 million RMB sales in 2023

60+ Global 500

30,000 m² production base

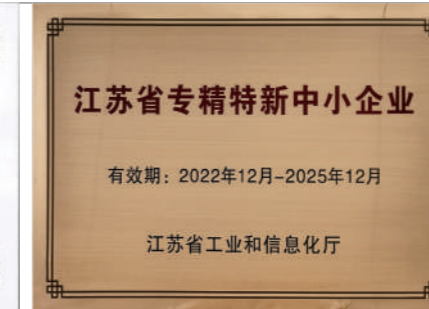
300 employees

>6,000 machines installed worldwide

WSD Honor



National High-tech Enterprises



Specialized Special New Enterprise



Environmental Protection Industrial Wastewater Evaporator Engineering Technology Research Center

WSD Qualification



ISO 9001



ISO 14001



ISO 45001

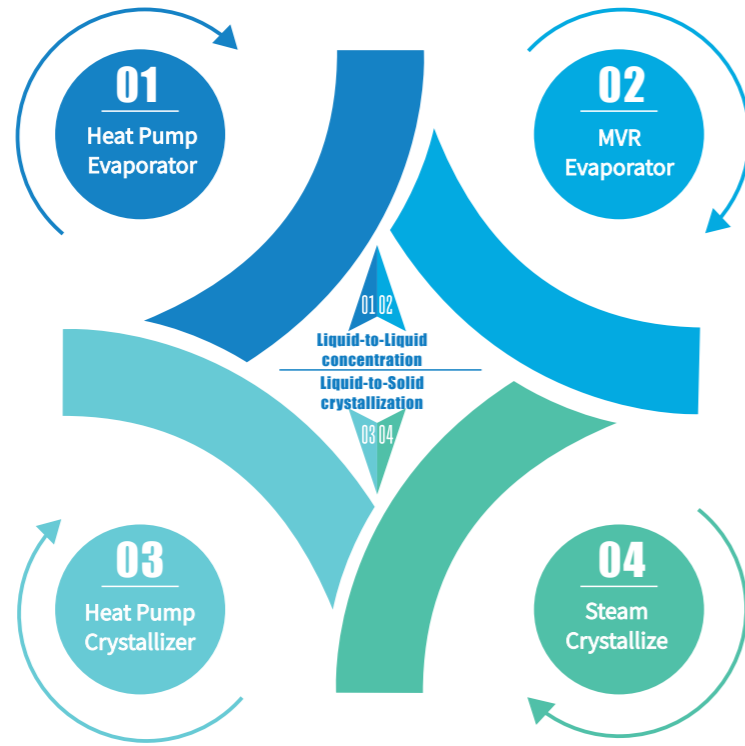


Production License Special Equipment

Invention Patent Certificates



Series



Application



The largest Evaporation Spent Liquid Drying Project in the world



Project Location: Yunnan Kunming / Sichuan / Guizhou
Raw Water: Evaporation spent liquid for the new energy industry
Concentration Process: Crystallization and drying
Capacity: 800 m³ / d

Projects list

Fine chemical Industry Wastewater



Project location:
Inner Mongolia, China

Wastewater:
high salt wastewater

Concentration index:
75%

Capacity:
35 m³ / d

New Energy Wastewater



Project location:
Yunnan, China

Treatment object:
evaporated spent liquid

Process:
crystallization and drying

Capacity:
70 m³ / d

Coal Chemical Industry Wastewater



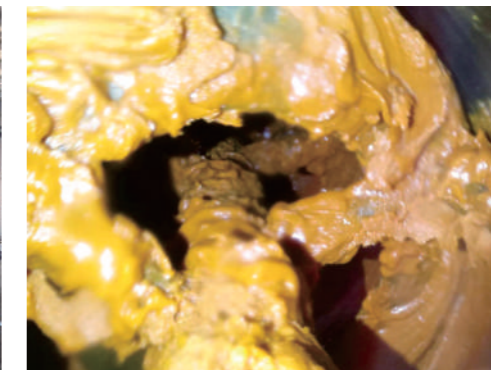
Project location:
Ningxia, China

Wastewater:
reuse of evaporation
spent liquid

Process:
crystallization and drying

Capacity:
72 m³ / d

Petrification Wastewater



Project location:
Chongqing

Wastewater:
natural gas purification for
neutralisation of saline
wastewater

Concentration index:
95%~98%

Capacity:
10 m³ / d

Mechanical Industry Wastewater



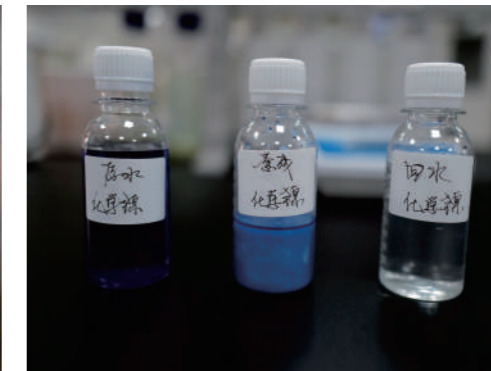
Project location:
Anhui, China

Wastewater:
cutting fluid wastewater

Concentration index:
90%

Capacity:
5 m³ / d

Electroplating Wastewater



Project location:
Zhejiang, China

Wastewater:
chemical nickel wastewater

Concentration index:
80%~90%

Capacity:
10 m³ / d

LT-I (0.2T-1T)

Low Temperature Heat Pump Evaporator

Technical Parameters

Parameter	Unit	LT-0.2T	LT-0.6T	LT-1T
Daily capacity	l/d	200	600	1000
Hourly capacity	l/h	10	30	50
Absorbed power	kwh	1.6	4.6	6.5
Electrical consumption	kwh/m ³	150-180	140-170	90-120
Length	mm	1450	1680	1890
Width	mm	990	990	1340
Height	mm	1815	1815	2050

Product Overview

- Soliges LT is a vacuum evaporator that utilizes heat pump technology with fully automatic control.
- The wastewater treatment capacity ranges from approximately 0.2T - 1T per day.
- The vacuum level is approximately -96kPa, and the evaporation temperature is around 37°C.
- Energy sources include electricity and compressed air.

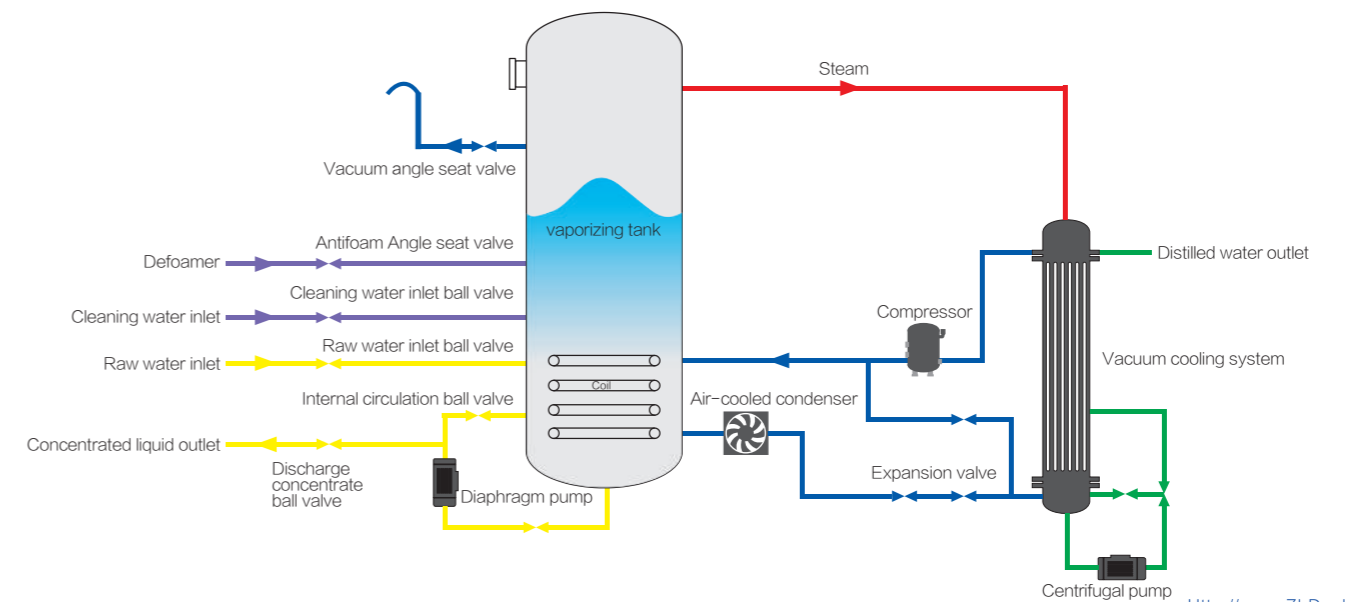
Main Features

- The evaporation vessel is constructed from SS AISI 316L stainless steel.
- Toroidal coil heat exchanger, made of A-316L stainless steel (for condensation).
- The control panel displays all operating data.
- Power input: 380V, 3-phase, 50Hz.
- Immersion heat exchanger (for evaporation).
- Main compressor for heating and cooling refrigerant (Freon gas R410a or R134a).
- Siemens PLC control and touch man-machine interface.
- Compatible with CM/activated carbon system.

Option

- The components of the machine in contact with liquid can be made of special corrosion-resistant materials (SAF2205, SAF 2507, or titanium) for treating wastewater containing high chloride levels.
- A remote control regulator enables wireless remote monitoring.

Working Principle



LT-II(3T-30T)

Low Temperature Heat Pump Evaporator



Technical Parameters

Parameter	Unit	LT-3T	LT-5T	LT-10T	LT-15T
Daily capacity	l/d	3000	5000	10000	15000
Hourly capacity	l/h	150	250	500	750
Absorbed power	kwh	20	35	66	78
Electrical consumption	kwh/m ³	100-135	90-120	90-120	90-120
Length	mm	2450	2740	4180	4440
Width	mm	1820	1950	2240	2340
Height	mm	2825	2970	3270	3665

Parameter	Unit	LT-20T	LT-25T	LT-30T
Daily capacity	l/d	20000	25000	30000
Hourly capacity	l/h	1000	1200	1500
Absorbed power	kwh	93	130	156
Electrical consumption	kwh/m ³	90-120	90-120	90-120
Length	mm	4440	5190	6200
Width	mm	2340	2900	2900
Height	mm	3665	5300	5300

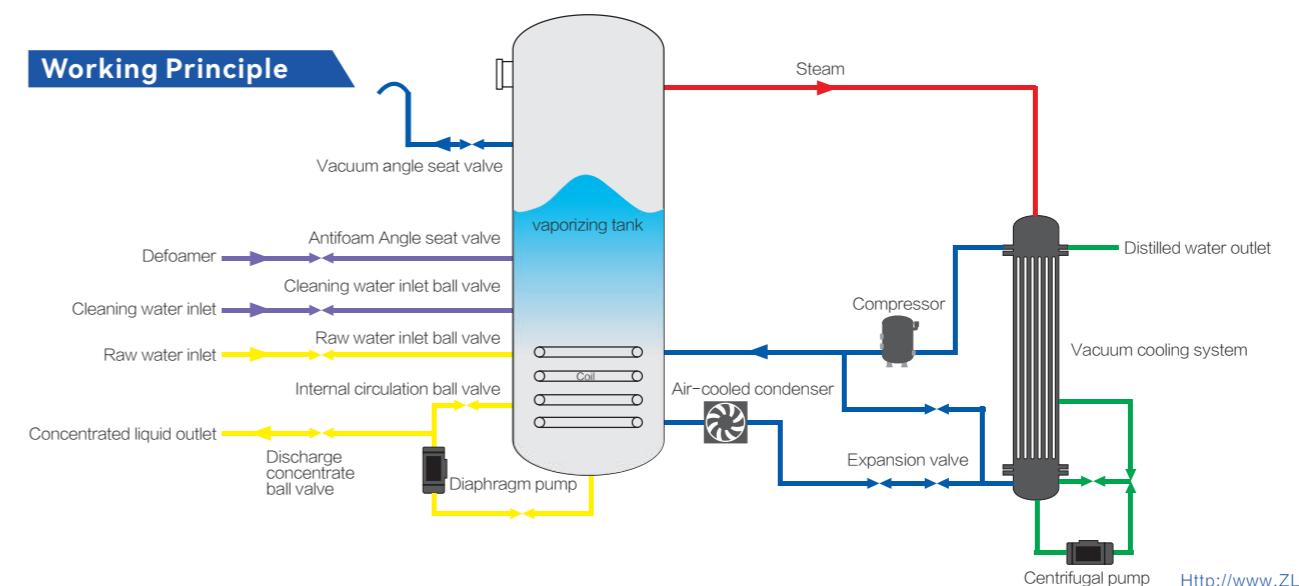
Product Overview

- Soliges LT is a vacuum evaporator utilizing heat pump technology with fully automatic control.
- The wastewater treatment capacity ranges from approximately 3T to 30T per day.
- The vacuum level is approximately -96kPa, and the evaporation temperature is about 37°C.
- Energy sources include electricity and compressed air.

Main Features

- The evaporation vessel is constructed from SS AISI 316L stainless steel.
- Toroidal coil heat exchanger, made of A-316L stainless steel (for condensation).
- The control panel displays all operating data.
- Power input: 380V, 3-phase, 50Hz.
- Immersion heat exchanger (for evaporation).
- Main compressor for heating and cooling refrigerant (Freon gas R410a or R134a).
- Siemens PLC control and touch man-machine interface.
- Compatible with CM / activated carbon system.

Working Principle



LT-ZQ (0.5T - 100T)

Steam Low Temperature Crystallizer

Technical Parameters

Parameter	Unit	ZQ-25	ZQ-150	ZQ-250	ZQ-500	ZQ-1000	ZQ-1500	ZQ-2000	ZQ-3000	ZQ-3500	ZQ-4000
Hourly capacity	l/h	25	150	250	500	1000	1500	2000	3000	3500	4000
Daily capacity	l/d	500	3000	5000	10000	20000	30000	40000	60000	70000	80000
Absorbed power	kwh	3	5	7	14	14	21	28	42	49	56
Steam consumption	m ³ /T	1.2	1.2	1.2	1.2	1.2	1.2	1.2	1.2	1.2	1.2
Length	mm	2700	3900	4500	4500	4500	4500	4500	4500	4500	4500
Width	mm	1680	1800	1850	1650	3050	5300	6900	10300	12500	13900
Height	mm	2700	3500	4200	3900	3900	3900	3900	3900	3900	3900

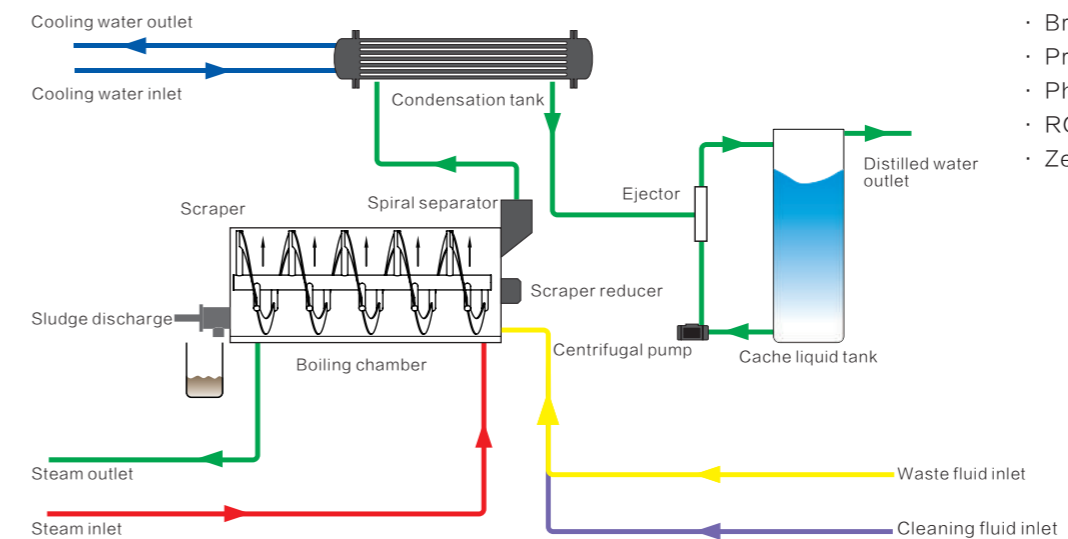
Product Overview

- Boiling chamber made of A-316 or 316L stainless steel.
- Jacketed heat exchanger not in contact with the inlet liquid. Vacuum circuit with a pump.
- Automatic discharge of concentrated solution by cylinder and screw scraper.
- Internal scraper controlled by gear motor to clean fouling and improve concentration.
- Condensation with plate heat exchanger.
- Automatic product inlet with modulating valves.
- Equipped with a foam detector and automatic defoaming circuit.
- Comprehensive control system with Siemens PLC and control panel.

Option

- An automatic cleaning system is installed inside the evaporator to ensure continuous operation.
- The machine panel is designed to optimize the appearance of the equipment.
- Machine-to-liquid contact parts (made of SAF 2507 or titanium) are constructed from special corrosion-resistant materials for treating wastewater containing perchlorides.
- Remote control monitoring can be achieved through the remote control regulator.

Working Principle



Main application

- LT-ZQ is specifically designed for:
- Adhesive crystallization concentration
 - Brine Water
 - Printing Wastewater Treatment
 - Pharmaceutical & Chemistry
 - RO Concentration Water
 - Zero Discharge Liquid



LT-VR (0.5T-2T)

Low Temperature Heat Pump Crystallizer

Technical Parameters

Parameter	Unit	LT-VR-25	LT-VR-50	LT-VR-100
Hourly capacity	l/h	25	50	100
Daily capacity	l/d	500	1000	2000
Absorbed power	kwh	8.5	18	30
Electrical consumption	kwh/m ³	280	280	270
Length	mm	2600	3623	4200
Width	mm	1500	1383	1700
Height	mm	2750	2958	3500

Product Overview

- The boiling chamber is primarily constructed from A-316/316L stainless steel.
- The jacketed heat exchanger does not come into contact with the inlet liquid.
- Vacuum loop with a pump.
- Automatic discharge of concentrated solution by cylinder and screw scraper.
- Heat pump circuit for the low-temperature evaporator with a compressor; Freon options include R407c or R134a.
- Built-in scraper controlled by a gear motor, utilizing spiral agitation and spiral conveying for dirt removal and increased concentration.
- Tubular heat exchanger for condensation.
- Equipped with a foam detector and automatic defoaming circuit.
- Integrated control system featuring Siemens PLC and control panel.

Main application

- Soliges LT-VR specially designed for:
- Pharmaceutical & Chemistry
 - MVR concentrate
 - Osmosis concentrate
 - Reverse osmosis concentrate
 - Adhesive crystallization concentrate
 - Brine
 - Printing wastewater treatment
 - Zero liquid discharge

Option

- An automatic cleaning system is installed inside the evaporator to ensure continuous operation.
- The machine panel is designed to optimize the equipment's appearance.
- Machine components in contact with liquids are made of a special anti-corrosive material (SAF 2507 or titanium) for treating wastewater with high chloride levels.
- A remote control regulator enables wireless remote monitoring.

Working Principle

